



▶ **Perforated type Cable Tray** ◀
(DEPT)

CABLE MANAGEMENT SYSTEM

.....
SAFE • DURABLE • CUSTOMIZED

DK **DAKONS**
ENGINEERING PVT. LTD.
ENGINEERING PVT. LTD.
DAKONS

Perforated type Cable Tray(DEPT)

ABOUT US



Since its introduction, Dakons Engineering Pvt. Ltd. has proven to be the ideal choice for cable management in many types of installations. Dakons is one of the most quality oriented brands in India in Cable management sector. Our product has been providing effective, efficient and innovative cable management solutions. Dakons is committed to provide technical, logistical and sales support across India & abroad.

MISSION OF QUALITY



Constantly striving to fulfill its mission to increase customer satisfaction, Dakons scrutinizes every step in the manufacturing process and applies strict procedures to ensure the highest possible quality in every product. We are an assessed & certified ISO 9001:2015 Quality management system. Dakons has developed a marketing and R & D strategy that offers installers and customers innovative products that combine reliability, safety and value.

VISION



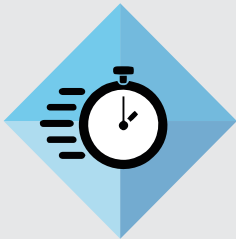
Dakons Engineering Pvt Ltd is started with a vision of creating an Indian brand offering world class quality & solutions in cable containment & support system for electrical & digital infrastructure.

DAKONS & INDIAN MARKET



In recent years the use of quality cable management products has expanded in India and Dakons is setting the pace in product innovation, quality control and timely delivery by producing world class products in India. In 2024 Dakons came up with a dedicated manufacturing facility in Vasai, Maharashtra to service the Indian & other Asian markets. This commitment to our customers will help meet the demands of an ever-growing market.

REASONS TO CHOOSE DAKONS CABLE MANAGEMENT SOLUTIONS



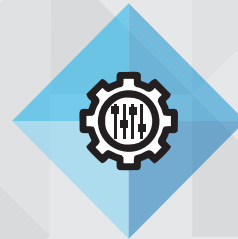
FAST

Fast coupling Solution
Time saving
for more economy.



SAFE

Products are designed
keeping cable &
installer safety in mind.



CUSTOMIZATION

Adapts to the changing
needs of the
project very fast.



CUSTOMER SUPPORT

Support our customers
for product selection,
installation, training & audits.



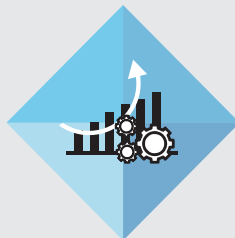
COMPLETE RANGE

For every environment
For all types of installations
For all types of activities.



QUALITY

The key strength of the
brand is to ensure best quality
products in its sector
in accordance to IEC 61537
& ISO 9001: 2015.



BETTER PRODUCTIVITY

Time saving in
installation saves
installation cost & increases
productivity.



AVAILABILITY

Running items kept
in stock standard lead
time - 3 -4 weeks.

Perforated type Cable Tray (DEPT)

Dakons Perforated trays (DEPT) Quality, safety, durability

In the development of Dakons perforated trays (DEPT) we always opt for high-quality virgin CRCA sheet in combination with a well-thought-out system consisting of various accessory fittings, useful accessories and coordinated fastenings. This guarantees you a high level of flexibility and efficiency in the design of your individual tray layout – and of course maximum protection for your cable installation. Thanks to the specific strengths of cable trunking system, we can offer you the perfect solution for your cable routing, regardless of whether you need to route a large number of cables over long distances, a small number of cables in limited installation space with proper ventilation to dissipate heat of cables. Products are coated with highly trusted sources (HDG/PC) to ensure durability of product. Every product we manufacture undergoes testing at various levels to ensure accuracy & offer the best quality product for our esteemed customers.

Applicable Atmospheric Environment

Type of Site	Applications	Aggression at Atmosphere	Corrosive Category According to ISO 9223	Recommended Finish of Coating
Working space/office Data centers	Temperature controlled closed infrastructure LV/control/CCTV	Indoor humidity	C1	GS/EZ/Powder coated
Public Building	Closed infrastructure LV/control/CCTV	Indoor humidity	C1	GS/EZ/Powder coated
Industry	Open to air infrastructure	Outdoor humidity	C3	HDG
Food/ Pharma Industry	infrastructure LV/control/CCTV	Indoor humidity	C4	SS 304

Safety

A safety factor of 1.7 must be incorporated into the tested structures, as per the safety concept required under the test standard. The failure scenario possible as a result is not to an amount to the respective structure breaking. Rather, it involves the structure becoming so heavily deformed that no further increase in load can be registered. For this reason, the elastic-plastic deformability of metal cable support systems makes them preferable to brittle plastic systems that break easily.

Whenever you are planning cable management systems, it is important to consider that the filling capacity of cable trays may exceed their load-bearing capacity.

Therefore, you must factor insufficient reserves and where applicable plan using a multi-layered approach. In general filling capacity is planned with not more than 45% available cross section.

Perforated type Cable Tray (DEPT)

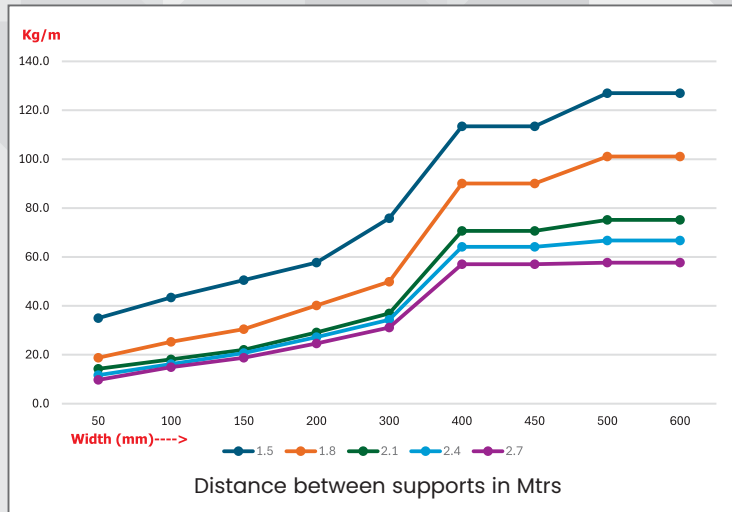
Load-bearing capacity /support distance

The load-bearing capacity of the installed system depends on how the system is filled/loaded and, in particular, how the load is applied to the supporting structure. However, from a safety perspective, the maximum possible cable load is crucial. DIN VDE 0639-1 is a good source of reference if you require further design and calculation criteria.

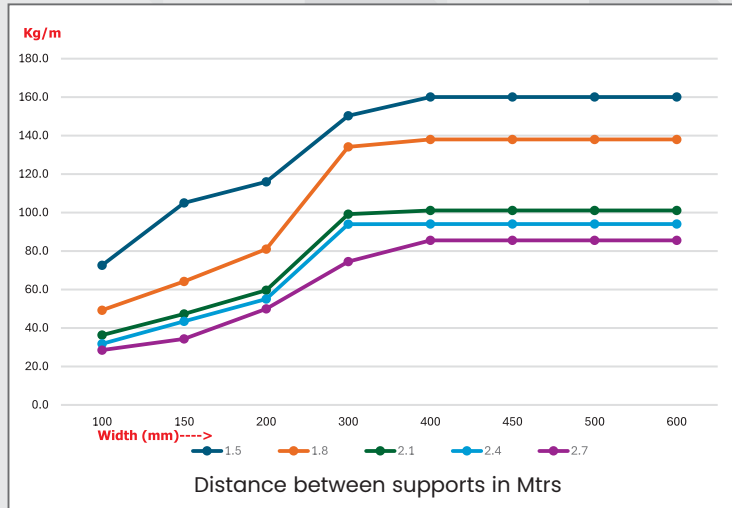
Support distance

The recommended standard support spacing is 1.5 m. However, a greater spacing may actually be possible depending on the specified fastening options (pillars, purlins, etc.). The load chart must be used to determine the maximum load that the cable tray can support with the given support spacing. Please refer to the chart for load bearing of the product at specific distance between supports.

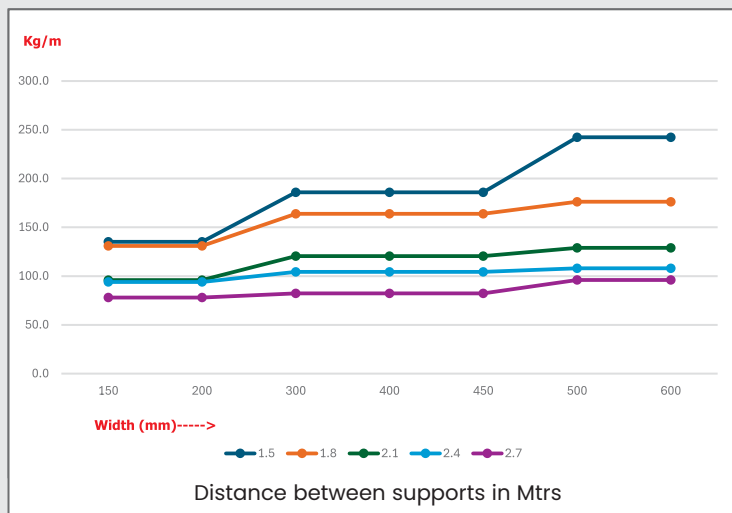
Weight bearing chart for 50 mm height DESOFT



Weight bearing chart for 100 mm height DESOFT



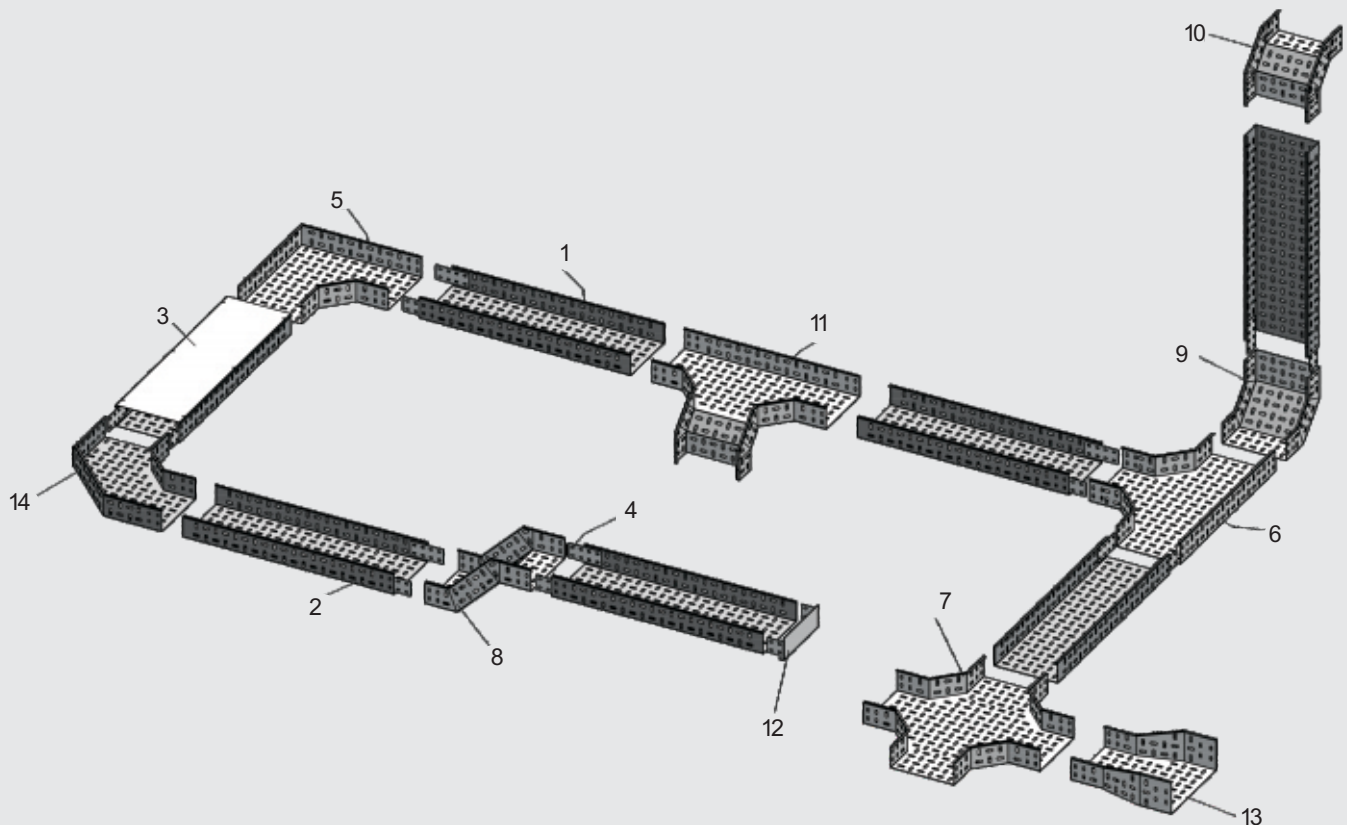
Weight bearing chart for 150 mm height DEPT



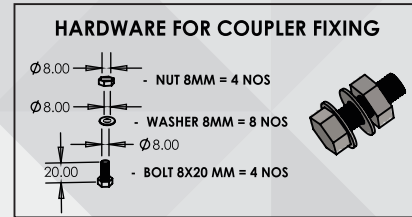
Perforated type Cable Tray(DEPT)

Index

No	PRODUCT NAME	PAGE NO.
1	PERFORATED TRAY LENGTH 2500MM	Page -6
2	PERFORATED TRAY LENGTH 2500MM WITHOUT COUPLER	Page -7
3	COVER FOR PERFORATED TRAY	Page -7
4	COUPLER PLATE FOR PERFORATED TRAY	Page -8
5	HORIZONTAL 90 DEGREE 2 WAY FOR PERFORATED TRAY	Page -8
6	HORIZONTAL 3 WAY FOR PERFORATED TRAY	Page -9
7	HORIZONTAL 4 WAY FOR PERFORATED TRAY	Page -9
8	VERTICAL 45 DEGREE 2 WAY FOR PERFORATED TRAY	Page -10
9	INSIDE RISER FOR PERFORATED TRAY	Page -10
10	OUTSIDE RISER FOR PERFORATED TRAY	Page -11
11	CABLE DROP FOR PERFORATED TRAY	Page -11
12	END CAP FOR PERFORATED TRAY	Page -12
13	CUSTOM REDUCER FOR PERFORATED TRAY	Page -12
14	90 DEGREE RADIUS BEND FOR PERFORATED TRAY	Page -12

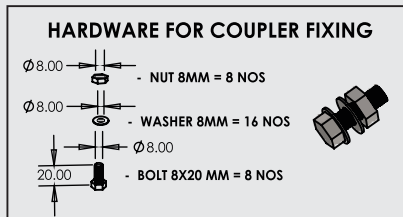
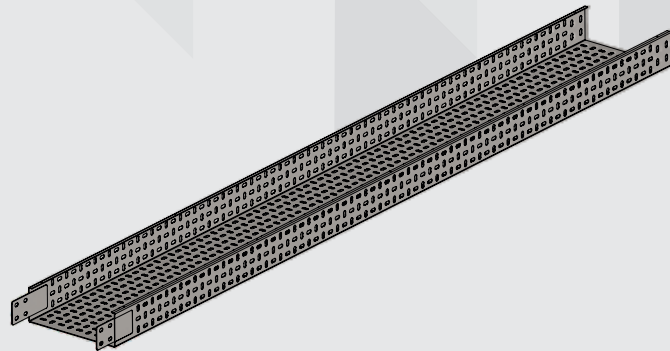


Perforated type Cable Tray (DEPT)



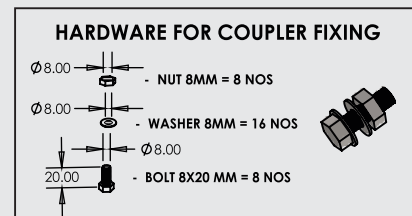
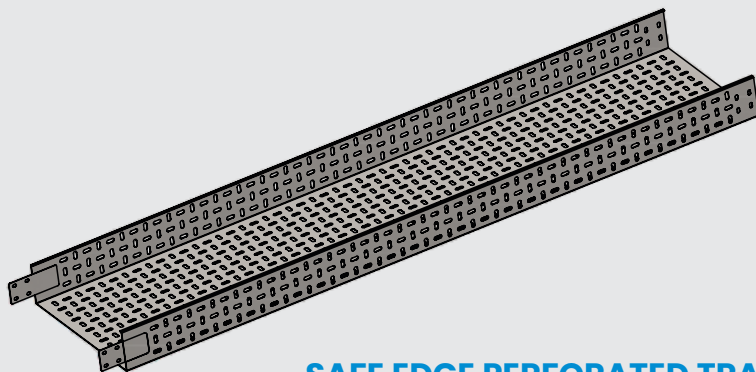
SAFE EDGE PERFORATED TRAY STRAIGHT LENGTH 50 MM HEIGHT-DEPT

		L (mm)	W (mm) XX	Pregalvanised	Powder coated	Hot dipped Galvanised	SS 304
1	PTXX052	2500	50-600		DEPTXX052PC	DEPTXX052HD	DEPTXX052SS



SAFE EDGE PERFORATED TRAY STRAIGHT LENGTH 100 MM HEIGHT-DEPT

		L (mm)	W (mm) XX	Pregalvanised	Powder coated	Hot dipped Galvanised	SS 304
1	PTXX102	2500	100-600		DEPTXX102PC	DEPTXX102HD	DEPTXX102SS

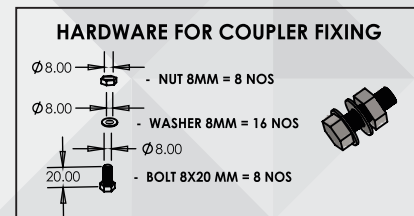
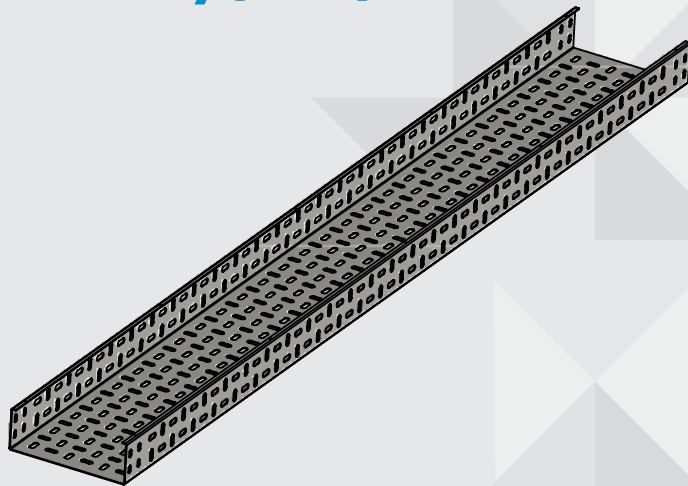


SAFE EDGE PERFORATED TRAY STRAIGHT LENGTH 150 MM HEIGHT-DEPT

		L (mm)	W (mm) XX	Pregalvanised	Powder coated	Hot dipped Galvanised	SS 304
1	PTXX152	2500	150-600		DEPTXX152PC	DEPTXX152HD	DEPTXX152SS

XX = 05/10/15/20/30/40/45/50/60

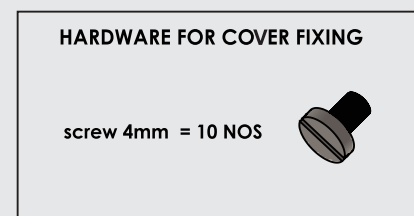
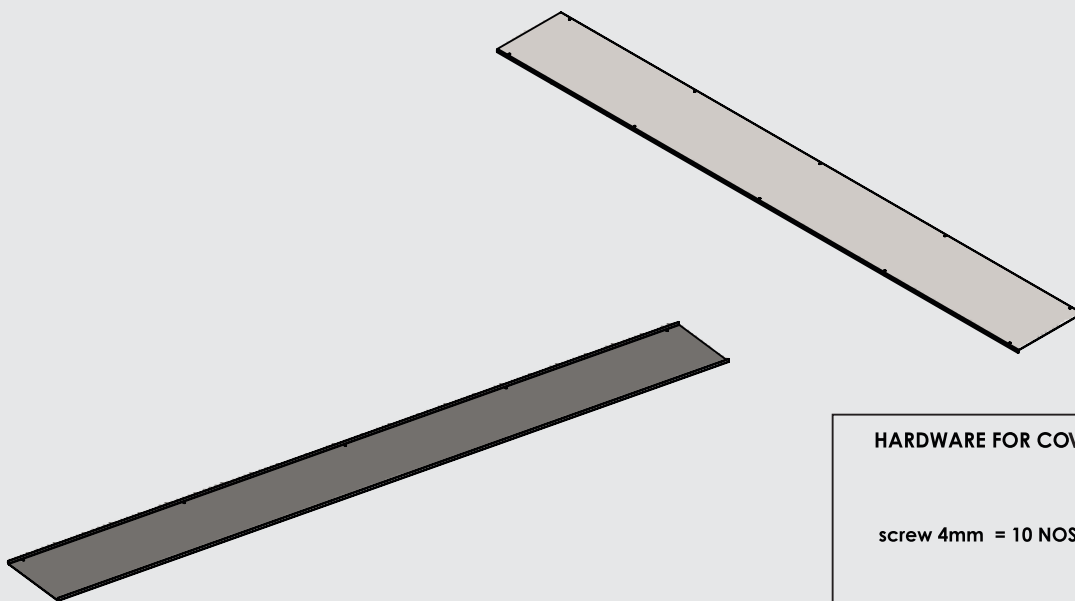
Perforated type Cable Tray (DEPT)



SAFE EDGE PERFORATED TRAY STRAIGHT LENGTH WITHOUT COUPLER-DEPT

		L(mm)	H(mm)	W(mm)	Pregalvanised	Powder coated	Hot dipped Galvanised	SS 304
1	PTXXH2	2500	50-150	50-600	DEPTXXH2PG			

XX = 05/10/15/20/30/40/45/50/60

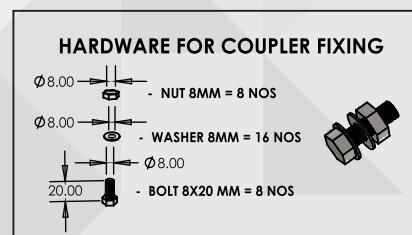
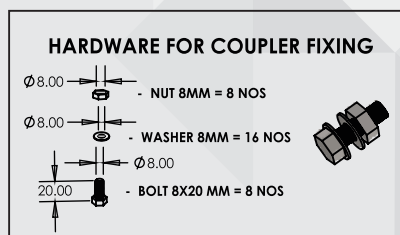
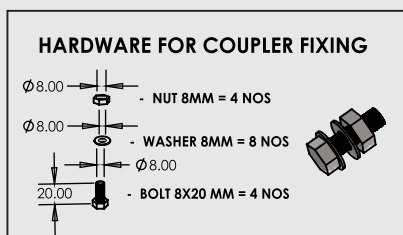
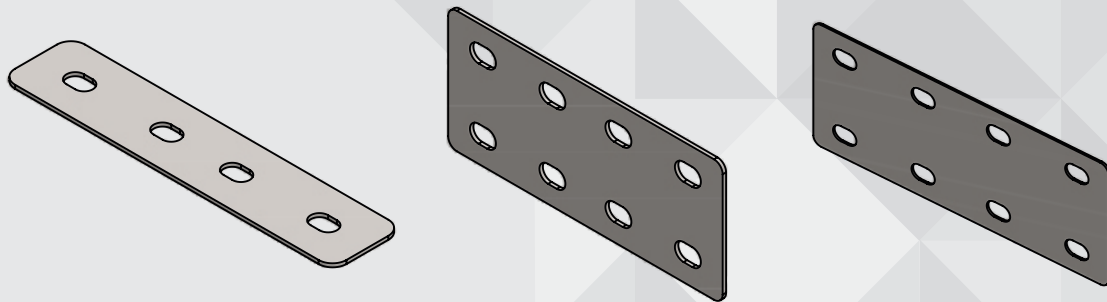


COVER For SAFE EDGE PERFORATED TRAY-DEPT

		L(mm)	T(mm)	H(mm)	Pregalvanised	Powder coated	Hot dipped Galvanised	SS 304
1	PTCOXX12	2500	1.2	50-600	DEPTCOXX12PG	DEPTCOXX12PC	DEPTCOXX12HD	DEPTCOXX12SS
2	PTCOXX16	2500	1.6	50-600	DEPTCOXX16PG	DEPTCOXX16PC	DEPTCOXX16HD	DEPTCOXX16SS
3	PTCOXX20	2500	2	50-600	DEPTCOXX20PG	DEPTCOXX20PC	DEPTCOXX20HD	DEPTCOXX20SS

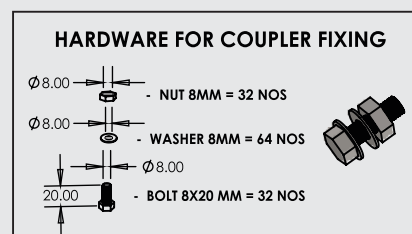
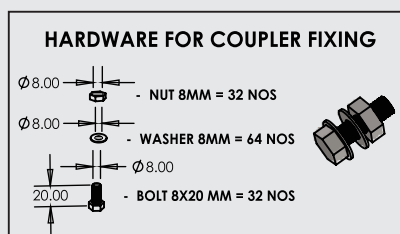
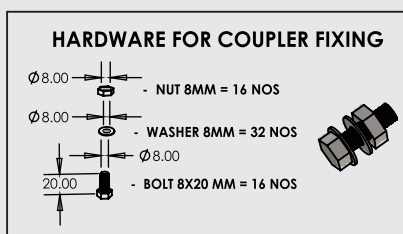
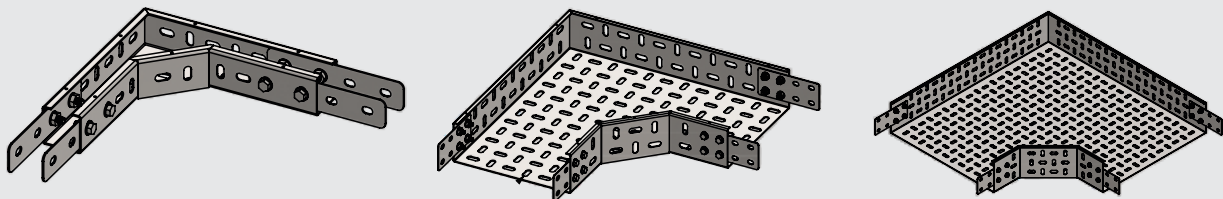
Perforated type Cable Tray (DEPT)

COUPLER PLATE FOR DEPT



		H(mm)	Pregalvanised	Powder coated	Hot dipped Galvanised	SS 304
1	PTCP052	50	DEPTCP052PG	DEPTCP052PC	DEPTCP052HD	DEPTCP052SS
2	PTCP102	100	DEPTCP102PG	DEPTCP102PC	DEPTCP102HD	DEPTCP102SS
3	PTCP152	150	DEPTCP152PG	DEPTCP152PC	DEPTCP152HD	DEPTCP152SS

HORIZONTAL 90 DEGREE 2 WAY - DEPT

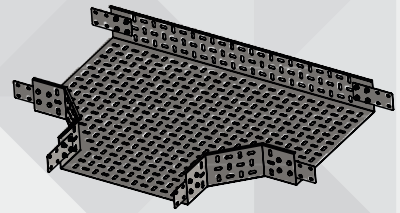
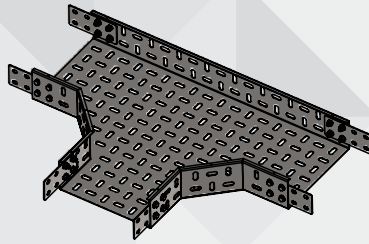
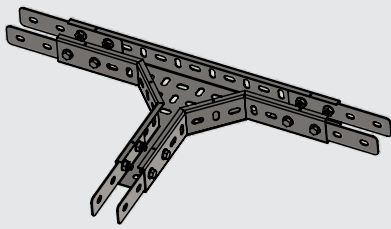


		H(mm)	W(mm)	Pregalvanised	Powder coated	Hot dipped Galvanised	SS 304
1	PT2WXX052	50	50-600		DEPT2WXX052PC	DEPT2WXX052HD	DEPT2WXX052SS
2	PT2WXX102	100	100-600		DEPT2WXX102PC	DEPT2WXX102HD	DEPT2WXX102SS
3	PT2WXX152	150	150-600		DEPT2WXX152PC	DEPT2WXX152HD	DEPT2WXX152SS

XX = 05/10/15/20/30/40/45/50/60

Perforated type Cable Tray (DEPT)

HORIZONTAL 3 WAY - DEPT



HARDWARE FOR COUPLER FIXING

- $\varnothing 8.00$ - NUT 8MM = 24 NOS
- $\varnothing 8.00$ - WASHER 8MM = 48 NOS
- $\varnothing 8.00$
- 20,00 - BOLT 8X20 MM = 24 NOS

HARDWARE FOR COUPLER FIXING

- $\varnothing 8.00$ - NUT 8MM = 48 NOS
- $\varnothing 8.00$ - WASHER 8MM = 96 NOS
- $\varnothing 8.00$
- 20,00 - BOLT 8X20 MM = 48 NOS

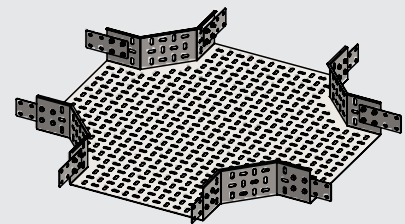
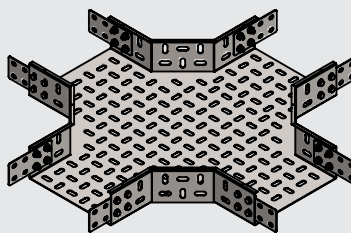
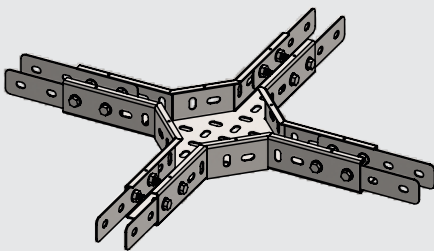
HARDWARE FOR COUPLER FIXING

- $\varnothing 8.00$ - NUT 8MM = 48 NOS
- $\varnothing 8.00$ - WASHER 8MM = 96 NOS
- $\varnothing 8.00$
- 20,00 - BOLT 8X20 MM = 48 NOS

		H(mm)	W(mm)	Pregalvanised	Powder coated	Hot dipped Galvanised	SS 304
1	PT3WXX052	50	50-600		DEPT3WXX052PC	DEPT3WXX052HD	DEPT3WXX052SS
2	PT3WXX102	100	100-600		DEPT3WXX102PC	DEPT3WXX102HD	DEPT3WXX102SS
3	PT3WXX152	150	150-600		DEPT3WXX152PC	DEPT3WXX152HD	DEPT3WXX152SS

XX = 05/10/15/20/30/40/45/50/60

HORIZONTAL 4 WAY - DEPT



HARDWARE FOR COUPLER FIXING

- $\varnothing 8.00$ - NUT 8MM = 32 NOS
- $\varnothing 8.00$ - WASHER 8MM = 64 NOS
- $\varnothing 8.00$
- 20,00 - BOLT 8X20 MM = 32 NOS

HARDWARE FOR COUPLER FIXING

- $\varnothing 8.00$ - NUT 8MM = 64 NOS
- $\varnothing 8.00$ - WASHER 8MM = 128 NOS
- $\varnothing 8.00$
- 20,00 - BOLT 8X20 MM = 64 NOS

HARDWARE FOR COUPLER FIXING

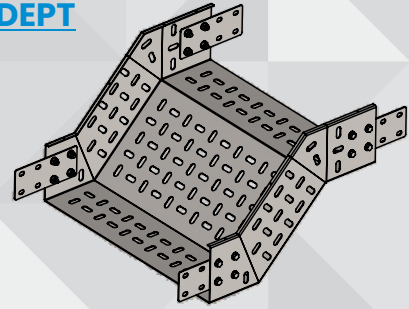
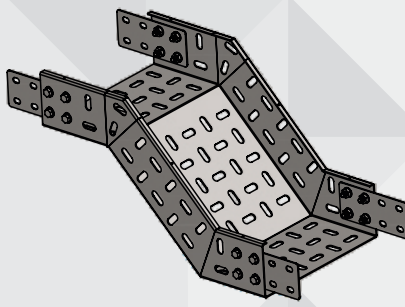
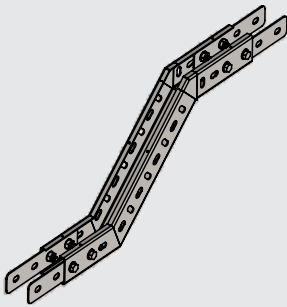
- $\varnothing 8.00$ - NUT 8MM = 64 NOS
- $\varnothing 8.00$ - WASHER 8MM = 128 NOS
- $\varnothing 8.00$
- 20,00 - BOLT 8X20 MM = 64 NOS

		H(mm)	W(mm)	Pregalvanised	Powder coated	Hot dipped Galvanised	SS 304
1	PT4WXX052	50	50-600		DEPT4WXX052PC	DEPT4WXX052HD	DEPT4WXX052SS
2	PT4WXX102	100	100-600		DEPT4WXX102PC	DEPT4WXX102HD	DEPT4WXX102SS
3	PT4WXX152	150	150-600		DEPT4WXX152PC	DEPT4WXX152HD	DEPT4WXX152SS

XX = 05/10/15/20/30/40/45/50/60

Perforated type Cable Tray (DEPT)

VERTICAL 45 DEGREE 2 WAY - DEPT



HARDWARE FOR COUPLER FIXING

- $\phi 8.00$ - NUT 8MM = 16 NOS
- $\phi 8.00$ - WASHER 8MM = 32 NOS
- $\phi 8.00$ - BOLT 8X20 MM = 16 NOS

HARDWARE FOR COUPLER FIXING

- $\phi 8.00$ - NUT 8MM = 32 NOS
- $\phi 8.00$ - WASHER 8MM = 64 NOS
- $\phi 8.00$ - BOLT 8X20 MM = 32 NOS

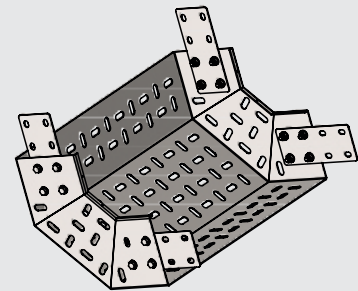
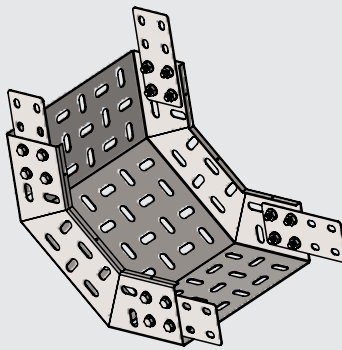
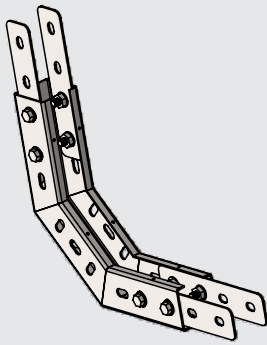
HARDWARE FOR COUPLER FIXING

- $\phi 8.00$ - NUT 8MM = 32 NOS
- $\phi 8.00$ - WASHER 8MM = 64 NOS
- $\phi 8.00$ - BOLT 8X20 MM = 32 NOS

		H(mm)	W(mm)	Pregalvanised	Powder coated	Hot dipped Galvanised	SS 304
1	PT45VRXX052	50	50-600		DEPT45VRXX052PC	DEPT45VRXX052HD	DEPT45VRXX052SS
2	PT45VRXX102	100	100-600		DEPT45VRXX102PC	DEPT45VRXX102HD	DEPT45VRXX102SS
3	PT45VRXX152	150	150-600		DEPT45VRXX152PC	DEPT45VRXX152HD	DEPT45VRXX152SS

XX = 05/10/15/20/30/40/45/50/60

INSIDE RISER FOR VERTICAL SHAFT - DEPT



HARDWARE FOR COUPLER FIXING

- $\phi 8.00$ - NUT 8MM = 16 NOS
- $\phi 8.00$ - WASHER 8MM = 32 NOS
- $\phi 8.00$ - BOLT 8X20 MM = 16 NOS

HARDWARE FOR COUPLER FIXING

- $\phi 8.00$ - NUT 8MM = 32 NOS
- $\phi 8.00$ - WASHER 8MM = 64 NOS
- $\phi 8.00$ - BOLT 8X20 MM = 32 NOS

HARDWARE FOR COUPLER FIXING

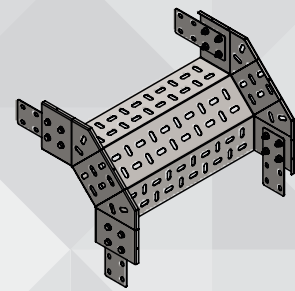
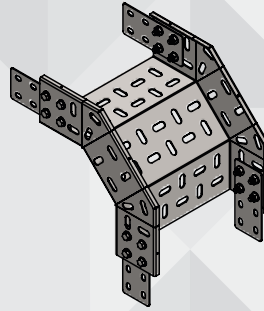
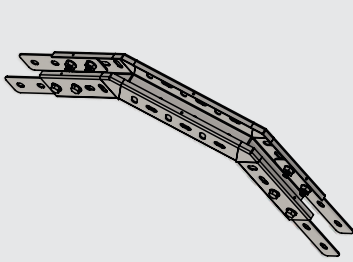
- $\phi 8.00$ - NUT 8MM = 32 NOS
- $\phi 8.00$ - WASHER 8MM = 64 NOS
- $\phi 8.00$ - BOLT 8X20 MM = 32 NOS

		H(mm)	W(mm)	Pregalvanised	Powder coated	Hot dipped Galvanised	SS 304
1	PTIRXX052	50	50-600		DEPTIRXX052PC	DEPTIRXX052HD	DEPTIRXX052SS
2	PTIRXX102	100	100-600		DEPTIRXX102PC	DEPTIRXX102HD	DEPTIRXX102SS
3	PTIRXX152	150	150-600		DEPTIRXX152PC	DEPTIRXX152HD	DEPTIRXX152SS

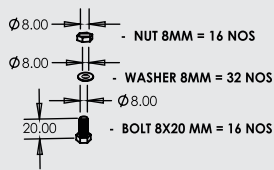
XX = 05/10/15/20/30/40/45/50/60

Perforated type Cable Tray(DEPT)

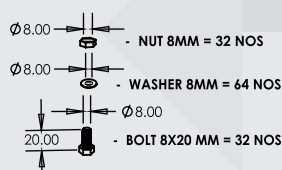
OUTSIDE RISER FOR VERTICAL SHAFT - DEPT



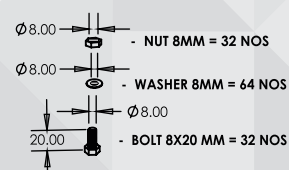
HARDWARE FOR COUPLER FIXING



HARDWARE FOR COUPLER FIXING



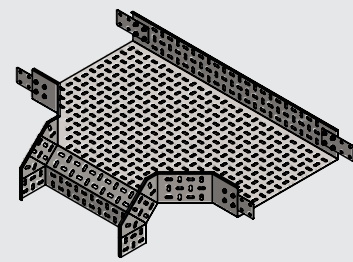
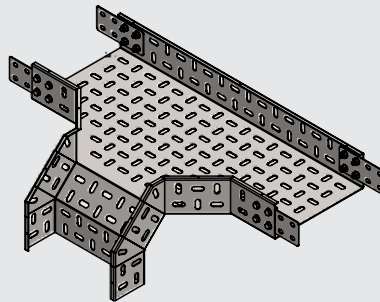
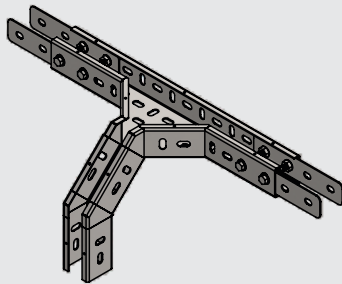
HARDWARE FOR COUPLER FIXING



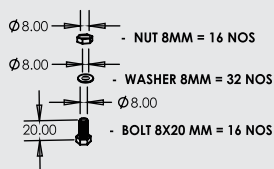
		H(mm)	W(mm)	Pregalvanised	Powder coated	Hot dipped Galvanised	SS 304
1	PTORXX052	50	50-600		DEPTORXX052PC	DEPTORXX052HD	DEPTORXX052SS
2	PTORXX102	100	100-600		DEPTORXX102PC	DEPTORXX102HD	DEPTORXX102SS
3	PTORXX152	150	150-600		DEPTORXX152PC	DEPTORXX152HD	DEPTORXX152SS

XX = 05/10/15/20/30/40/45/50/60

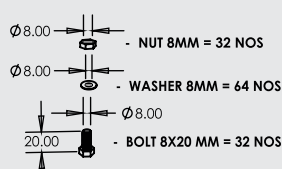
CABLE DROPOUT - DEPT



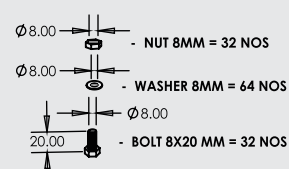
HARDWARE FOR COUPLER FIXING



HARDWARE FOR COUPLER FIXING



HARDWARE FOR COUPLER FIXING

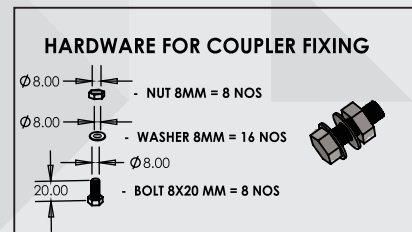
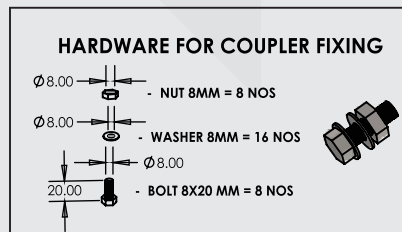
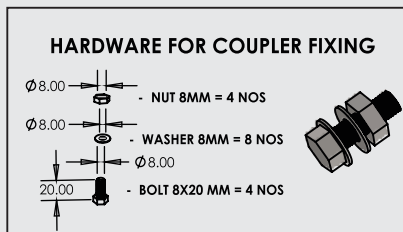
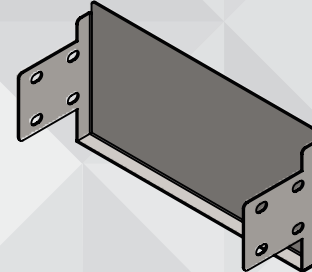
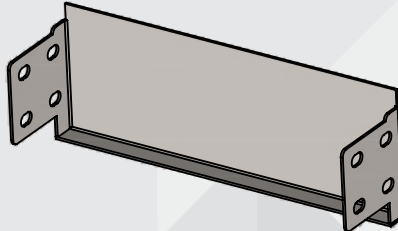
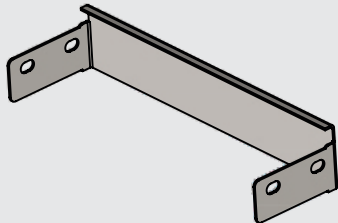


		H(mm)	W(mm)	Pregalvanised	Powder coated	Hot dipped Galvanised	SS 304
1	PTCDXX052	50	50-600		DEPTCDXX052PC	DEPTCDXX052HD	DEPTCDXX052SS
2	PTCDXX102	100	100-600		DEPTCDXX102PC	DEPTCDXX102HD	DEPTCDXX102SS
3	PTCDXX152	150	150-600		DEPTCDXX152PC	DEPTCDXX152HD	DEPTCDXX152SS

XX = 05/10/15/20/30/40/45/50/60

Perforated type Cable Tray (DEPT)

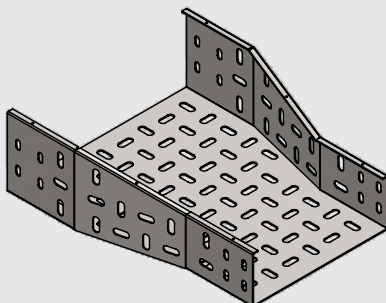
END CAP - DEPT



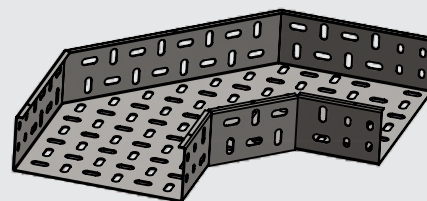
		H(mm)	W(mm)	Pregalvanised	Powder coated	Hot dipped Galvanised	SS 304
1	PTECXX052	50	50-600	DEPTECXX052PG	DEPTECXX052PC	DEPTECXX052HD	DEPTECXX052SS
2	PTECXX102	100	100-600	DEPTECXX0102PG	DEPTECXX102PC	DEPTECXX102HD	DEPTECXX102SS
3	PTECXX152	150	150-600	DEPTECXX152PG	DEPTECXX152PC	DEPTECXX152HD	DEPTECXX152SS

XX = 05/10/15/20/30/40/45/50/60

OTHER ACCESSORIES



CUSTOM REDUCER



90 DEGREE RADIUS BEND



CABLE MANAGEMENT SYSTEM

SAFE • DURABLE • CUSTOMIZED



For more information kindly call or write to us

Dakons Engineering Pvt. Ltd.

Regd Office: Unit No. U/3, U/3-2, U/3-3, Ground Floor, Green Industrial park,
Dongaripada, Poman, Vasai East 401208, Dist. Palghar. Maharashtra. India.

☎ **8355873719**
🌐 www.dakons.in
✉ inquiry@dakons.in